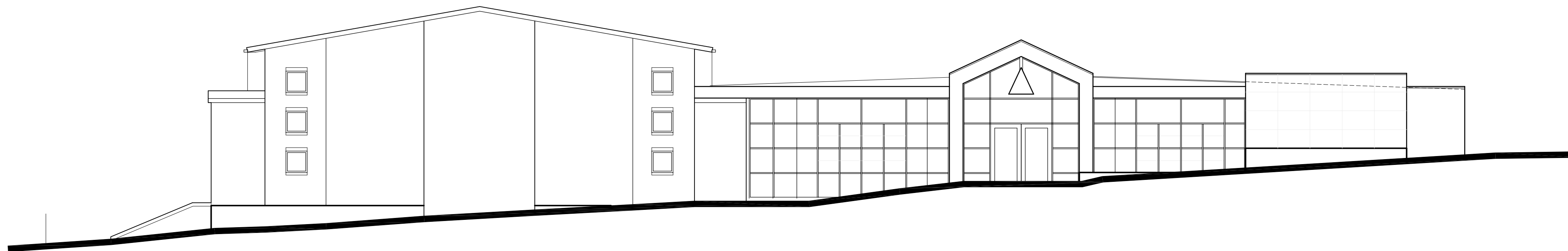


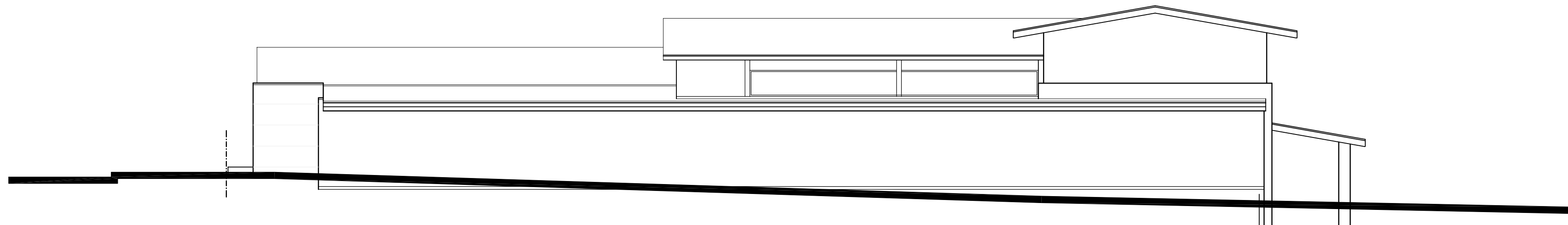
F.L. 18.23



West Elevation

F.L. 21.43

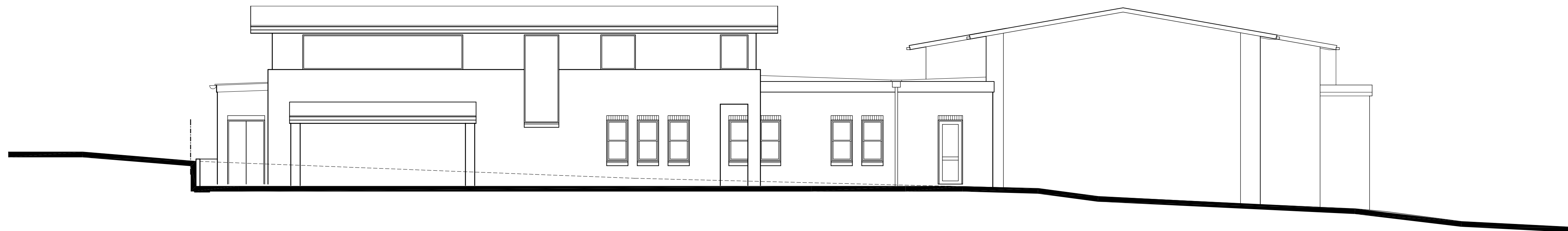
F.L. 18.23



South Elevation

F.L. 21.43

F.L. 18.23



East Elevation

Amendments

P 27/06/06 Preliminary Issue

Project: **St John's Anglican Church - New Parish Centre**
Cnr Oakes Avenue and Avon Road, Dee Why

Drawing: **First Floor Plan**

Hodges Shorten Architects Pty Ltd
Suite 82 Chatswood Village 47 Neridah Street Chatswood NSW 2067
phone 9419 5199 fax 9419 5632

Date: 20/9/06
Scale: 1:100 @A1

Drawing No. **2314.W6P**